

GLORY

## CI-300X for back office

Cash recycling system



A large capacity cash recycler, CI-300X accelerates back-office processes in high-volume cash locations. Delivering increased productivity and security for your staff and reducing the risk of cash shrinkage, the CI-300X enables a multitude of flexible operational processes to be implemented, allowing staff to focus on other activities that improve customer experience and drive growth for your business.

Euro



## As part of the CASHINFINITY™ solution, the CI-300X is a high speed, large capacity recycler that meets the demands of retail and gaming organisations.

|                                  | CI-300BX (banknote recycler)  | CI-100CX (coin recycler)  |
|----------------------------------|---|---|
| <b>Dimensions (W × D × H)</b>    | without monitor<br><b>UL-291 24-hours safe:</b><br>420 × 1,017 × 1,350 mm<br>(16.5" × 40.0" × 53.1")<br>with monitor (monitor height:<br>423 mm / 16.7")<br><b>UL-291 24-hours safe:</b><br>420 × 1,017 × 1,643-1,773 mm<br>(16.5" × 40.0" × 64.7"-69.8") | 460 × 835 × 1,140 mm<br>(18,1" × 32,9" × 44,9")<br><b>Optional monitor height adjustable:</b><br>1,533-1,664 mm (60,4" – 65,5") |
| <b>Weight</b>                    | with monitor (monitor weight: 9.7kg / 21 lbs)<br><b>UL-291 24-hours safe:</b><br>600 kg / 1,323 lbs. (stacking safe bag type / collection cassette type)  | 250 kg / 551 lbs<br>(optional monitor weight: 9,7 kg / 21 lbs)  |
| <b>Functions</b>                 | Closed-loop solution with front-office devices (specific software required)<br>Dynamic "follow-me" LED guidance for deposit and dispense transactions<br>Easy-to-understand error recovery animation  | Direct coin dispensing into manual cash drawer  |
| <b>Operation</b>                 | 15" Touch screen display  |   |
| <b>Number of recycle modules</b> | 5 recycling cassette configurations and up to 7 recycling modules   | 8 recycling stackers  |
| <b>Currencies</b>                | EURO<br>For other currency information, please contact your local GLORY office for further information  |   |

|  | CI-300BX (banknote recycler)   | CI-100CX (coin recycler)  |
|--|--|---|
| <b>Capacity</b>                          | Cassette 1: 1 bin for recycle (2,700-1,400 notes)<br>or 2 bin for recycle (750-290 + 1,050-430 notes)<br>Cassette 2: 1 bin for recycle (2,700-1,400 notes)<br>or 2 bin for recycle (750-290 + 1,050-430 notes)<br>Cassette 3-5: 1 bin for recycle (2,700-1,400 notes)<br><b>Optional modules:</b> Total 5 or 7 recycle modules | Total 8 stackers (Stacker M: 8)<br>2 EURO 1,550 coins<br>1 EURO 1,850 coins<br>0.5 EURO 1,650 coins<br>0.2 EURO 2,200 coins<br>0.1 EURO 3,150 coins<br>0.05 EURO 3,000 coins<br>0.02 EURO 3,950 coins<br>0.01 EURO 5,350 coins<br>*Each capacity is the volume of coins per stacker |
| <b>Coin overflow capacity</b>            | -  | 1,000 coins <sup>2</sup>  |
| <b>Collection capacity*</b>              | 4,500-3,600 notes <sup>1</sup> (stacking safe bag type)<br>3,200-2,400 notes <sup>1</sup> (collection cassette type)   | 5,000 coins <sup>2</sup>  |
| <b>Total capacity of banknotes/coins</b> | Dependent on recycle module configuration  |   |
| <b>Deposit</b>                           | Capacity of inlet:<br>Speed of cash in:  | 600 coins <sup>2</sup><br>15 coins / sec <sup>3</sup>   |
| <b>Dispensing</b>                        | Capacity of outlet:<br>Speed of cash out:  | 5 coins/sec per stacker <sup>3</sup>  |
| <b>Safe</b>                              | UL-291 24-hours  | Counterfeit detection   |
| <b>Terminal</b>                          | Selectable PC: Windows client OS PC; Windows Server OS PC  |   |
| <b>Supply voltage range</b>              | AC100V – 240V (50/60 Hz)   |   |
| <b>Current consumption</b>               | 9.8~5.2 A  | 5.8~3.4 A   |
| <b>Approval</b>                          | CE, UL   |   |

<sup>1</sup> Dependent on banknote quality. Capacities are for reference only and are not guaranteed.

<sup>2</sup> The capacity of coins is calculated in 10 EURO cent. <sup>3</sup> The capacity of coins is calculated in 1 EURO cent.

Specifications are subject to change without notice. Please read the instruction manual carefully to ensure correct equipment usage. All figures, capacities and speeds quoted in this brochure are as tested by GLORY LTD. They may vary depending on usage conditions and are not guaranteed.

## Related solutions...

### CI-10X

Compact and high capacity solutions enabling automated cash handling at point of sale positions.



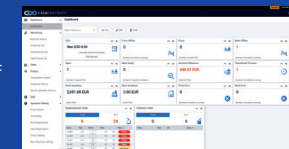
### CI-100X

Fast secure cash processing and storage in the back office.



### CI-SERVERX

Centralised management of cash throughout a store in the front and back office.



Glory, Infinity View, 1 Hazelwood, Lime Tree Way, Chineham, Basingstoke, Hampshire RG24 8WZ, UK

+44 (0)1256 368000 Sales enquiries +44 (0)844 811 2006 info@uk.glory-global.com [glory-global.com](http://glory-global.com)

DS-CI-300X-0423/EURO\_1.0

Glory Global Solutions is part of GLORY LTD. This document is for general guidance only. As the Company's products and services are continually being developed it is important for customers to check that the information contained herein includes the latest particulars. Although every precaution has been taken in preparation of this document, the Company and the publisher accept no responsibility for errors or omissions. The Company and the publisher accept no liability for loss or damages resulting from the use of the information contained herein. This document is not part of a contract or licence save insofar as may be expressly agreed. All capabilities and capacity and throughput figures are subject to note/coin size, note/coin quality and process used. GLORY, CASHINFINITY and their associated graphical representations are each a trademark or a registered trademark of GLORY LTD. Group of Companies in the EU, the U.S. and other countries. Windows and Windows Server are trademarks of the Microsoft group of companies. All other trademarks are the property of their respective owners. © Glory Global Solutions (International) Limited 2023.