

GLORY



Self-order & pay restaurant kiosk

K27

If you're interested in increasing customer check size and improving your in-restaurant experience look no further than the K27 Self-order & pay restaurant kiosk. Ultra-thin, ultra-sleek the K27 is designed to deliver if you're short on space or you want maximum self-service capacity. Cash, card and mobile payment options mean your customers will benefit, however they choose to pay.



More than just hardware, best-in-class software for menu management and easy integration with your POS system delivers the full solution. What is holding you back?

Dimensions (W x D x H)	411 x 386 x 1572 mm
Weight (with/without screen)	50kg / 43kg
Power supply	100-240 VAC, 50/60 Hz
Current consumption	Single-side, wall-mounted: 3A – Double-side: 5A
Operating environment	0°C to +40°C, 20 to 80% relative humidity, non-condensing
Storage environment	-20°C to +70°C, 5 to 90% relative humidity, non-condensing
Material	Steel, aluminum, stainless steel

PC	Processor Intel Core i5-6500 3.3 GHz SSD 128 GB RAM 8GB Connectivity: 4 x USB 3.0, 4 x USB 2.0, 1 x VGA, 1 x HDMI, 2 x COM, 2 x Gigabit Ethernet, Audio in/out
Screen	LCD Multi-Touch Monitor, 10 points 27", 598 x 336 mm, 1920 x 1080 pixels 16.7 million colors Vision angle: Vertical 178° / Horizontal 178° Contrast typ. 1200, min 800 Brightness typ. 270 nits, min 225 nits
Scanner	Type: 2D Optical Resolutions: 4.0 mil (Code 39), 5.0 mil (PDF417), 7.5 mil (Data Matrix)
Printer	Technology: Direct thermal line printing, black/white, 250mm/s Resolution: 203 x 203DPI or 203 x 180DPI Max. paper roll diameter: 83 mm End-of-roll sensor
Options Available	EFT: Different preparations available Camera for facial recognition
Safety certifications	EN62368-1, IEC62368-1, UL62368-1
EMC, EMI certifications	CISPR 32/EN55032 class A, CISPR35/EN55035, IEC/EN 61000-3-2, IEC/EN 61000-3-3 FCC part 15 class B, CAN ICES 003

*Specifications are subject to change without notice. Please read the instruction manual carefully to ensure correct equipment usage. All figures, capacities and speeds quoted in this brochure are as tested by GLORY LTD. They may vary depending on usage conditions and are not guaranteed.

Related solutions...

CI-HYBRID 15

A slim and flexible solution for installing a cash recycling device at the point of sale.



DOT

Harness AI to customise each customer's journey with product recommendations.

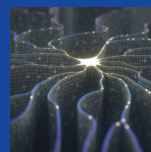


TABLE SERVICE

Enhance your customers' experience further by delivering their order to the table.



Glory, Infinity View, 1 Hazelwood, Lime Tree Way, Chineham, Basingstoke, Hampshire RG24 8WZ, UK

+44 (0)1256 368000 info@uk.glory-global.com [glory-global.com](https://www.glory-global.com)

DS-ACRELECK27-0621_1.0

Glory Global Solutions is part of GLORY LTD. This document is for general guidance only. As the referenced products and services are continually being developed it is important for customers to check that they have the latest particulars. Although every precaution has been taken in preparation of this document, Glory and any other company identified or referred to in this document accept no responsibility or liability for loss or damages resulting from the use of, or reliance on, the information contained in this document. This document is not part of a contract or licence save insofar as may be expressly agreed. All capabilities, capacity and throughput figures are subject to note/coin size, note/coin quality and process used. GLORY, ACRELEC and their associated graphical representations are each a trademark or a registered trademark of GLORY LTD. Group of Companies in the EU, the U.S. and other countries. © Glory Global Solutions (International) Limited 2021.